



Webbs  
Helping people move since 1994

Church Street | Cannock | WS11 6DW

£150,000

 **Webbs**  
estate agents



## Summary

**\*\* CURRENTLY OPERATED AS AN HMO \*\* FOUR BEDROOM TERRACE PROPERTY \*\* COMMUNAL KITCHEN \*\* COMMUNAL BATHROOM \*\* PARKING TO REAR \*\* REAR GARDEN \*\* EARLY VIEWING ESSENTIAL \*\***

Webbs Estate Agents have pleasure in offering for sale this mid terrace property, currently being operated as an HMO. The property is situated in a popular and convenient residential location, being close to all local amenities, shops and schools. Briefly comprising on the ground floor : Entrance hallway , Bedroom, living room and kitchen. The first floor landing leads to three bedrooms. and a family bathroom. Externally there is a driveway for parking and a garden to the rear with parking access. For a viewing please call 01543 468846.

## Key Features

- HMO PROPERTY
- 4 BEDROOMS
- KITCHEN
- BATHROOM
- ENCLOSED GARDEN
- MID TERRACE
- LIVING ROOM
- ENTRANCE HALLWAY
- GCH, UPVC DG
- EARLY VIEWING ESSENTIAL

## Rooms and Dimensions

### ENTRANCE HALLWAY

### GROUND FLOOR BEDROOM

11'8" x 7'7" (3.56 x 2.33)

### LIVING ROOM

11'10" x 11'7" (3.63 x 3.532)

### KITCHEN

5'6" x 11'11" (1.70 x 3.64)

### SECOND BEDROOM

11'9" x 11'10" (3.6 x 3.62)

### BEDROOM THREE

12'0" x 6'8" (3.68 x 2.05)

### BEDROOM FOUR

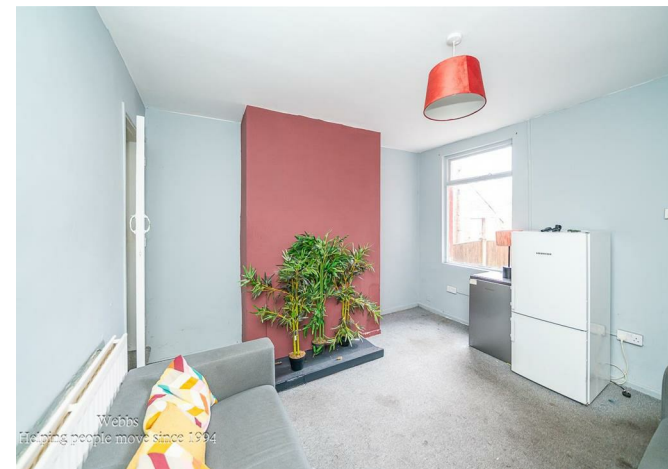
12'7" x 5'9" (3.84 x 1.77)

### BATHROOM

5'6" x 4'9" (1.7 x 1.45)

### OUTSIDE

### Identification Checks





Webbs Estate Agents - endeavour to maintain accurate depictions of properties in Virtual Tours, Floor Plans and descriptions, however, these are intended only as a guide and purchasers must satisfy themselves by personal inspection.

